



presents

Sand Key EMS Summit 2006

The Premier Data Management and EMS Administration Conference

August 24-26, 2006 · Sheraton Sand Key Resort · Clearwater Beach, FL



Conference Location

Sheraton Sand Key Resort · 1160 Gulf Boulevard,
Clearwater Beach, FL 33767 · (727) 595-1611

Conference Overview

Don't miss this dynamic opportunity to understand how cutting edge data collection and technology combined with solid EMS administration and leadership skills can help your EMS System. Learn to not only survive the constantly changing world of EMS, but to embrace the changes to increase your EMS System's productivity and quality of patient care.

Who Should Attend

EMS / Fire Administrators and Managers, Quality Managers, EMS Educators, IS Professionals within the EMS Community, Medical Directors and Providers.

More Information

Visit www.emlrc.org or call (800) 766-6335.
EMLRC · 3717 S. Conway Road · Orlando, FL 32812

Presented by

Emergency Medicine Learning & Resource Center
www.emlrc.org

CONFERENCE BROCHURE



presents

Sand Key EMS Summit 2006

The Premier Data Management and EMS Administration Conference

August 24-26, 2006 · Sheraton Sand Key Resort · Clearwater Beach, FL



August 24-26, 2006

Visit www.emlrc.org for more information.



Location of Sand Key EMS Summit 2006



Sheraton Sand Key Resort · 1160 Gulf Boulevard
Clearwater Beach, FL 33767 · (727) 595-1611
www.sheratonsandkey.com · Room Rate: \$149 S/D plus tax.
Mention EMLRC Sand Key EMS Summit 2006.
Guest Room Reservations Cut-Off Date: July 23, 2006
Reserve your room early!

Conference Dates & Hours

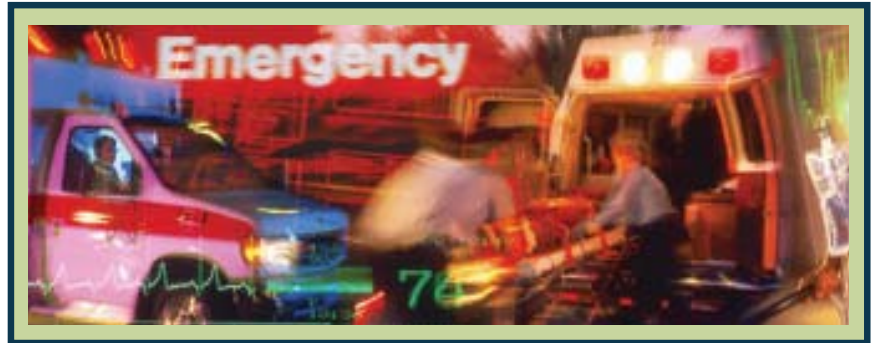
Thursday, August 24 th	8:00am - 4:30pm
Friday, August 25 th	8:00am - 5:30pm
Saturday, August 26 th	8:30am - 12:30pm <i>Post-conferences</i>

Exhibit Hall Dates & Hours

Exhibits Open	
Thursday, August 24 th	9:00am - 2:30pm
Friday, August 25 th	9:00am - 2:30pm

> **Emergency Medicine Learning & Resource Center**
3717 South Conway Road, Orlando, FL 32812
800.766.6335 | Fax 407.281.4407 | www.emlrc.org

NONPROFIT
ORGANIZATION
US POSTAGE
PAID
PERMIT NO. 2361
ORLANDO, FL



Conference Focus

Sand Key EMS Summit 2006's general sessions will focus on Data Collection, Technology Management, Quality Management and EMS Systems Administration.

Program Objectives

Following the completion of the conference, participants will be able to:

- ~ Develop a plan for implementation of remote access technology for their agency.
- ~ Describe the current threats that face security agencies utilizing information systems.
- ~ Discuss the legislative issues related to technology and Public Safety Agencies.
- ~ Discuss the updates related to the process used by NHTSA for collection of EMS data.
- ~ Explain the benefits of a quality customer service program.
- ~ Develop a comprehensive and collaborative approach to measure their EMS agency's effectiveness and value to their community.
- ~ Describe the basic concepts of science of systems thinking.
- ~ Explain how the science of systems thinking can help you leverage improvement in your EMS System.
- ~ Explain the threats & risks that are associated with the use of databases and networks infrastructures.
- ~ Explain the threats & risks that are associated with the use of wireless networks.
- ~ Discuss the process for re-prioritizing Paramedic QA Targets.
- ~ Discuss how attitude affects EMS personnel.
- ~ Discuss the team dynamics associated with being an EMS Officer.
- ~ Discuss the process for providing an EMS agency's worth to the community.
- ~ Discuss the concepts of basic performance measurement tools/capability analysis.
- ~ Discuss the process for creating a lean EMS organization.
- ~ Discuss the process and planning need to influence public policy.
- ~ Explain the roll of system dynamics in optimizing EMS System design.
- ~ Discuss the use of the EMS Trauma care tool kit for data collection and QA.

- ~ Discuss the use of the EMS Cardiac care tool kit for data collection and QA.
- ~ Discuss the pros and cons of utilizing a clinical benchmarking data process.
- ~ Explain the do's and don'ts of using charts and graphs in the data collection and QA process.
- ~ Discuss the need for professional standards.
- ~ Discuss the development of professional standards and how to implement them in an EMS System.

Continuing Education Credit

Paramedics and EMTs - This educational activity is approved by the Florida Emergency Medicine Foundation, an organization accredited by the Continuing Education Coordinating Board for Emergency Medical Services (CECBEMS) CME approval by the Florida Department of Health, Bureau of EMS has been applied for. Participants that require approval other than CECBEMS and Florida Department of Health, Bureau of EMS should consult their local Medical Director or State EMS Office.

Physicians - The Florida Emergency Medicine Foundation is accredited by the Accreditation Council for Continuing Medical Education to sponsor continuing medical education for physicians. The Florida Emergency Medicine Foundation designates this continuing medical activity for up to 17 hours in Category 1 of the Physician's Recognition Award of the American Medical Association. Each Physician should claim only those hours of credit that he/she actually spends in the educational activity. Application has been made to the American College of Emergency Physicians for ACEP Category 1 credit and the American Osteopathic Association for Category 2 Credit.

Nurses - Up to 17 nursing contact hours will be provided by the Florida Emergency Medicine Foundation (FEMF). FEMF is approved as a provider of nursing education by the Florida Board of Nursing, Provider # 2731.

General Program - Approved for 13 credit hours.

Post-conference - Approved for 4 credit hours.

To receive CME credit, participants must sign in each day. Attendance at an entire session is required to receive credit.

Americans with Disabilities

EMLRC wishes to ensure no individual with a disability is excluded from the conference. If auxiliary aids or services are required in order to attend this program, notify EMLRC 15 days prior to the start of the conference.

Sand Key EMS Summit 2006 - The Premier

PROGRAM SCHEDULE

Thursday, August 24, 2006

- 7:00am-4:30pm Registration
- 9:00am-2:30pm Exhibits Open
- 8:00am-8:15am Welcome

General Sessions

- 8:15am-9:15am **Making Progress by Returning to the Basics: Why a Big City Returned to an ALS-BLS System**
C. Crawford Mechem, MD
- 9:15am-9:45am **Break in Exhibit Hall**
- 9:45am-10:45am **Putting Service Back in Emergency Medical Services**
Matt Zavadsky, MHA
- 10:45am-11:45am **Beyond Utstein: Re-prioritizing Paramedic QA Targets**
Brent Myers, MD
- 11:45am-1:00pm **Lunch on own / Visit Exhibits**

Concurrent Breakout - B-1 Management/Supervisory

- 1:00pm-2:00pm **Attitudes in EMS: The Good, The Bad, The Ugly!**
Tim Holman, MBA, MHA, REMT-P
- 2:00pm-2:30pm **Break in Exhibit Hall**
- 2:30pm-3:30pm **Team Dynamics for the EMS Officer**
Tim Holman, MBA, MHA, REMT-P
- 3:30pm-4:30pm **Proving Your Worth? Or Not?**
Matt Zavadsky, MHA

Concurrent Breakout - B-2 Data and Quality Management

- 1:00pm-2:00pm **NEMESIS: National Database Standards Rollout**
N. Clay Mann, PhD
Greg Mears, MD
- 2:00pm-2:30pm **Break in Exhibit Hall**
- 2:30pm-3:30pm **Basic Performance Improvement Tools: Capability Analysis**
Michael Schnyder, NREMT-P
- 3:30pm-4:30pm **Creating a Lean EMS Organization**
Todd Hatley, MBA, MHA, EMT-P

Friday, August 25, 2006

- 7:00am-4:30pm Registration
- 9:00am-2:30pm Exhibits Open

General Sessions

- 8:15am-9:15am **Error Proofing EMS**
Todd Hatley, MBA, MHA, EMT-P
- 9:15am-9:45am **Break in Exhibit Hall**
- 9:45am-10:45am **Telemedicine in EMS :The Tucson Project**
Dave Ridings, BS
- 10:45am-11:45am **Influencing Public Policy**
Matt Zavadsky, MHA
C.T. (Chuck) Kearns, MBA, EMT-P
- 11:45am-1:00pm **Lunch on own / Visit Exhibits**

Concurrent Breakout - B-1 Management/Supervisory

- 1:00pm-2:00pm **Leadership in Turbulent Times**
Tim Holman, MBA, MHA, REMT-P
- 2:00pm-2:30pm **Break in Exhibit Hall**
- 2:30pm-3:30pm **Optimizing EMS System Design: The Roll of System Dynamics**
Todd Hatley, MBA, MHA, EMT-P
- 3:30pm-4:30pm **Evolving Communications Technologies and Legislation and Their Effects for Public Safety Agencies**
William Ott, NREMT-P, MS
- 4:30pm-5:30pm **Everything You Wanted to Know About a Public Utility Model EMS System**
C.T. (Chuck) Kearns, MBA, EMT-P

Concurrent Breakout - B-2 Data and Quality Management

- 1:00pm-2:00pm **Network Remote Access Options: VPN, Secure Mail, VoIP and Other Hot Technologies**
William Ott, NREMT-P, MS
- 2:00pm-2:30pm **Break in Exhibit Hall**
- 2:30pm-3:30pm **Clinical Benchmarking Data Process**
Ryan Lewis, BS, EMT-P
- 3:30pm-4:30pm **The Do's and Don'ts of Charts and Graphs**
Michael Schnyder, NREMT-P
- 4:30pm-5:30pm **The EMS Trauma Care and Cardiac Care Toolkit Projects**
Cindy Raisor, RN

Saturday, August 26, 2006

- 7:30am-8:30am Registration
- 8:30am-12:30pm Post-conferences

Post-conference 1

- 8:30am-12:30pm **Network Design, Data Security and Remote Access 101**
William Ott, NREMT-P, MS

Post-conference 2

- 8:30am-12:30pm **Conduct Unbecoming: Professional Standards Development**
Christopher Riley, MS, CFO
- 1:00pm-5:00pm **NEMESIS: Software Developer/Vendor Meeting**
By Invitation Only

FACULTY

Todd Hatley, MBA, MHA, EMT-P
Chief Executive Officer
Integral Performance Solutions
Wilmington, NC

Tim Holman, MBA, MHA, REMT-P
Chief
German Township Fire & EMS
Chief Executive Officer
Holman Training & Development
North Hampton, OH

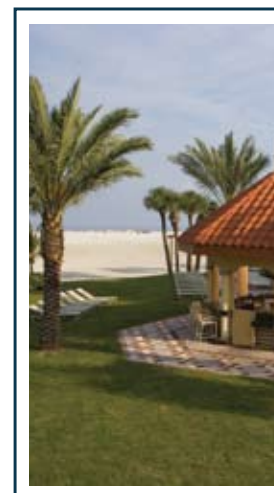
C.T. (Chuck) Kearns, MBA, EMT-P
Director
Pinellas County EMS &
Fire Administration
Largo, FL

Ryan Lewis, BS, EMT-P
Division Chief
Quality Management and Clinical Affairs
Wake County EMS
Raleigh, NC

N. Clay Mann, PhD
Principal Investigator
National EMS Information
System Technical Assistance Center
Salt Lake City, UT

Greg Mears, MD, FACEP
Medical Director
North Carolina Office of EMS
Chairman of NASEMSD Data Committee
Associate Professor
Department of Emergency Medicine
University of North Carolina-Chapel Hill
Chapel Hill, NC

C. Crawford Mechem, MD
EMS Medical Director
Philadelphia Fire Department,
Philadelphia, PA



Sand Key EMS Summit 2006

Data Management and EMS Administration Conference

SAND KEY EMS SUMMIT 2006 CONFERENCE REGISTRATION FORM

 First Name MI Last Name Suffix

 Title Agency Mailing Label Priority Code

 Address

 City State Zip

 Phone Fax Email

 Type of License State of License License # Exp. Date

Required Information to receive CME/CEU's

MD/DO _____ EMT _____ Paramedic _____ RN _____ PA _____ Other _____

Check all that apply

Registration Fee Schedule *Check only one if applicable*

Before or on August 4, 2006

- \$350 - Registration
 - \$335 - 3 or more from 1 agency (each)
- After August 4, 2006*
- \$365 - Registration
 - \$350 - 3 or more from 1 agency (each)

Indicate if you need a CME/CEU Certificate.
 Yes, I need a CME/CEU Certificate.
 No, I do not need a CME/CEU Certificate.
Certificates are printed in advance and can be picked up at the registration desk prior to departure from the conference. If you do not check yes, a certificate will not be available for you on-site.

Post-conferences Fee Schedule *Check only one if applicable*

- \$100 - PC-1 Network Design, Data Security and Remote Access 101
- \$100 - PC-2 Conduct Unbecoming: Professional Standards Development

3 or more from 1 agency Registrations must be sent together to qualify for the 3 or more from 1 agency discount.

Indicate if you plan to attend any of the following:

- Thursday** B-1 Management/Supervisory B-2 Data and Quality Management
- Friday** B-1 Management/Supervisory B-2 Data and Quality Management
- Saturday** PC-1 Network Design, Data Security and Remote Access 101
- Saturday** PC-2 Conduct Unbecoming: Professional Standards Development

Registration Fee \$ _____ Post-conference Fee \$ _____ Total Fees Enclosed \$ _____

Payments accepted by Visa, Mastercard, Check or Purchase Order.

American Express not accepted. Payment must accompany registration form.

Make checks payable to EMLRC and mail to 3717 S. Conway Road, Orlando, FL 32812
 Phone: (407) 281-7396 or (800) 766-6335 Fax: (407) 281-4407 Federal Tax ID #59-3001777
Credit card number needed to guarantee registration unless Check or PO accompanies registration form.

Credit Card Number: _____

Credit Card Type: Visa Mastercard

Expiration Date: _____ Cardholder Name: _____

Cardholder Signature: _____

Note: Cancellations and refunds will be made only if requested in writing to the Sand Key EMS Summit 2006 Conference Registrar. No refunds will be made after August 18, 2006. For all cancellations, an administrative fee of \$75.00 will be retained.

Brent Myers, MD, MPH

Medical Director
 Wake County EMS
 Raleigh, NC

William Ott, NREMT-P, MS

Manager and Chief Consultant
 Carolina PC Support, LLC
 Cary, NC

Cindy Raisor, RN

EMS Performance Improvement Coordinator
 EMS Performance Improvement Resource Center
 North Carolina Office of EMS

Dave Ridings, BS

Assistant Chief - EMS
 Telemedicine Project Manager
 Tucson Fire department,
 Tucson, AZ

Christopher Riley, MS, CFO

Battalion Chief
 Costa Mesa Fire Department
 Costa Mesa, CA

Michael Schnyder, NREMT-P

Director
 National EMS Information System Technical
 Assistance Center
 Salt Lake City, UT

Matt Zavadsky, MHA

Director
 Volusia County EMS
 Daytona Beach, FL

Faculty Disclosure

The Florida Emergency Medicine Foundation adheres to ACCME standards regarding industry support of continuing medical education, and the disclosure of faculty and commercial sponsor relationships (if any) will be made known during the educational activity. Faculty are expected to openly disclose inclusion of discussion on any off-label, experimental or investigative use of drugs, devices, or equipment or any commercial sponsorship relations in their presentations.

