

# Symposium by the Sea 2005

The Annual Meeting of the Florida College of Emergency Physicians

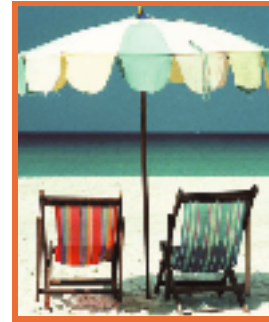
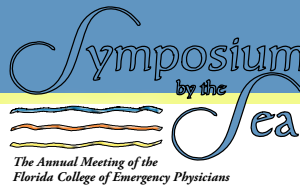
**EXHIBITOR  
PROSPECTUS**

**August 11-14, 2005**

The Marco Island Marriott Resort  
Marco Island, FL

## Overview

*Symposium by the Sea* is an educational opportunity designed for the busy emergency physician, resident, nurse, PA, and allied health professional who demands cutting edge information regarding their ever-changing practice environment.



## Exhibiting & Sponsorship Opportunities

- Present your products and services to emergency care professionals.
- Broaden your contacts within the emergency care market.
- Increase your organization's viability in the emergency care market.

## Audience

**Over 225** Emergency Physicians, Residents, Physician Assistants, Nurses and other Emergency Care Professionals will attend *Symposium by the Sea 2005*.

## Provided by the

Emergency Medicine Learning & Resource Center  
in conjunction with the  
Florida College of Emergency Physicians.



# Symposium by the Sea

The Annual Meeting of the  
Florida College of Emergency Physicians



# Symposium by the Sea 2005

The Annual Meeting of the Florida College of Emergency Physicians

> Emergency Medicine Learning & Resource Center  
3717 South Conway Road, Orlando, FL 32812  
(800) 766-6335 | Fax (407) 281-4407 | [www.emlrc.org](http://www.emlrc.org)

NON-PROFIT  
ORGANIZATION  
US POSTAGE  
PAID  
PERMIT NO. 2361  
ORLANDO, FL

## Location of Symposium by the Sea 2005

The Marco Island Marriott Resort  
400 South Collier Boulevard  
Marco Island, FL 34145  
(800) 438-4373 • (239) 394-2511  
[www.marcoislandmarriott.com/](http://www.marcoislandmarriott.com/)  
Room Rate: \$137 S/D plus tax.  
Mention EMLRC Symposium by the Sea 2005.  
Guest Room Reservations Cut-Off Date:  
July 10, 2005  
*Reserve your room early!*



## Exhibit Hall Dates & Hours

### Set-up

Friday, August 12<sup>th</sup> 1:00pm - 4:00pm

### Exhibits Open

Friday, August 12<sup>th</sup> 5:30pm - 7:30pm

Saturday, August 13<sup>th</sup> 7:30am - 11:00am  
Sunday, August 14<sup>th</sup> 7:00am - 11:00am

### Dismantle

Sunday, August 14<sup>th</sup> 11:00am - 12:30pm

Wine & Cheese Reception with Attendees



Emergency Medicine Learning & Resource Center • 3717 S. Conway Road • Orlando, FL • 32812  
(800) 766-6335 • (407) 281-7396 • fax (407) 281-4407 • [info@emlrc.org](mailto:info@emlrc.org) • [www.emlrc.org](http://www.emlrc.org)

## Conference Highlights

The *Emergency Medicine Learning & Resource Center* and the *Florida College of Emergency Physicians* invite you to exhibit at our annual meeting, *Symposium by the Sea*. This program is especially designed for physicians, physician assistants, nurses and other health care professionals. To increase the value of this meeting to your organization, we provide the following opportunities for you to interact with the conference attendees and faculty:

- *Welcome Wine & Cheese Reception - Friday Evening,*
- *Social Event - Saturday Evening and*
- *Continental Breakfasts and Refreshment Breaks in the Exhibit Hall.*

## Assignment of Space

Exhibit space will be assigned upon receipt of completed registration form and registration fee. Application and payment must be received at the EMLRC office by July 11, 2005 to reserve space and to be included in the attendee conference materials.

## Sponsorship Opportunities

★ Platinum - \$5000; ★ Gold - \$2500; ★ Silver - \$1500

*Symposium by the Sea* sponsors enjoy prominence in all *Symposium by the Sea 2005* promotional materials as well as on the EMLRC website. **All Sponsorship Levels include an 8' x 10' exhibit space.**

*Example:* The Silver Level Sponsorship is a tremendous value at \$1500 considering your organization is provided an 8' x 10' booth *plus* recognition by the conference attendees as a conference supporter. For additional sponsorship information visit [www.emlrc.org](http://www.emlrc.org) or contact Jerry Cutchens at (800) 766-6335 x15 or [jcutchens@emlrc.org](mailto:jcutchens@emlrc.org).

## Satellite Symposia

Satellite Symposium Programs are available for select organizations to showcase their products and services. The time slots available:

- Thursday, August 11, 2005 - 5:00pm - 7:00pm Available
- Friday, August 12, 2005 - 12:30pm - 2:30pm Available
- Saturday, August 13, 2005 - 12:30pm to 2:30pm Reserved by National Medical Foundation for Asset Protection.

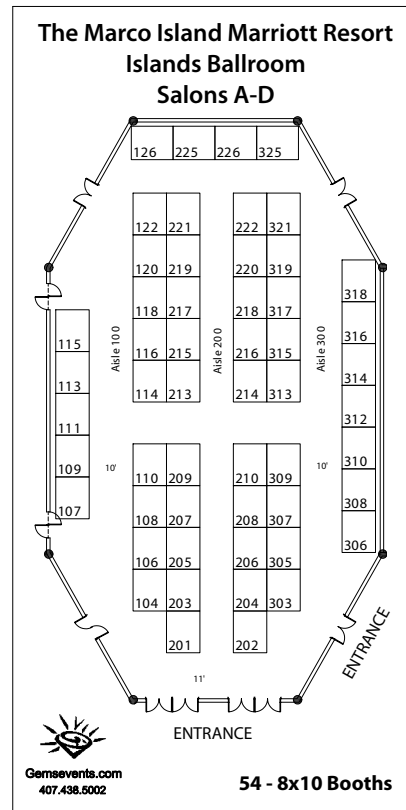
Contact Jerry Cutchens at (800) 766-6335 x15 to discuss the Satellite Symposium Programs.

## Exhibit Contractor

*Symposium by the Sea 2005's* Exhibit Contractor is GEMS Exposition Management Services. A service kit will be **emailed** to each registered exhibitor and will also be available at [www.emlrc.org](http://www.emlrc.org). April Austin with GEMS can be reached at (407) 438-5002 or [april@gemsevents.com](mailto:april@gemsevents.com).

## Exhibitor Liability

Exhibiting organizations assume full responsibility for their professional/personal property and obtaining insurance to protect against lost or stolen items.



## Exhibit Space Information & Fees

### Exhibit Fees

8' x 10' Booth \$775  
Wine & Cheese for Reception \$225

### Included in Exhibit Fee

8' x 10' Booth Carpeted booth with draped back and side walls, 6' table, 2 chairs, wastebasket, 2 exhibitor badges and a booth identification sign.

### Included in Wine & Cheese Fee

Wine & Cheese A special *Wine & Cheese Reception* will officially open the exhibits Friday, August 12<sup>th</sup> from 5:30pm through 7:30pm. Three bottles of wine will be provided to you for sharing with the attendees.

## Exhibit Registration Form

Organization Name - As to appear on your identification sign

Exhibitor Name(s) - As to appear on your name badge(s)

Address

City, State Zip

Phone Fax Email

Preferred Booth Space - 1st Choice \_\_\_\_\_ 2nd Choice \_\_\_\_\_ 3rd Choice \_\_\_\_\_

\_\_\_\_\_ **Yes! We want to Sponsor the Conference! Our level circled. Includes booth.**

\_\_\_\_\_ ★ Platinum - \$5000; ★ Gold - \$2500; ★ Silver - \$1500

\_\_\_\_\_ \$ 775.00 8' x 10' Booth Exhibit Fee

\_\_\_\_\_ \$ 225.00 Wine & Cheese for Reception Fee

\_\_\_\_\_ \$ 30.00 Additional Representative (2 included with each booth)

\_\_\_\_\_ \$ 100.00 Late Fee after July 11, 2005

\_\_\_\_\_ **\$ Total Fees Enclosed**

Exhibit Fees may be paid by Visa, Mastercard or Check.

Make checks payable to EMLRC and mail to 3717 S. Conway Road, Orlando, FL 32812.

Phone: (407) 281-7396 or (800) 766-6335 Fax: (407) 281-4407.

Credit Card Number: \_\_\_\_\_

Credit Card Type: [ ] Visa [ ] Mastercard

Expiration Date: \_\_\_\_\_ Cardholder Name: \_\_\_\_\_

Cardholder Signature: \_\_\_\_\_

*I/We agree to abide by all Rules and Regulations listed and which are part of the agreement between my/our company and the Emergency Medicine Learning & Resource Center. I/We also agree to comply with ACCME Standards for Commercial Support. You are hereby authorized to reserve space for my/our company for SBS 2005. Cancellations and refunds will be made if requested in writing to the SBS 2005 Registrar. No refunds will be made after July 11, 2005. For cancellations an administrative fee of \$100.00 will be retained.*